



## Push-Lock – Air & Water Tight

- Simple, one person 'push-on' assembly lowers installation costs
- Self-locking ring design assembles in seconds; is re-enterable
- High strength molded plastic body ideal for buried duct applications
- Pre-lubricated O-ring is water and air tight suitable for both cable pulling & jetting applications

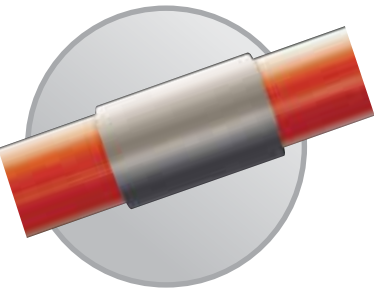
Dura-Line #	Product Description	Duct OD Working Range
20003137	0.5" Push-Lock HDPE Push On, Air Tight, Water Tight	0.840"
20001491	0.75" Push-Lock HDPE Push On, Air Tight, Water Tight	1.05"
20001844	1" Push-Lock HDPE Push On, Air Tight, Water Tight	1.305-1.325"
20001845	1.25" Push-Lock HDPE Push On, Air Tight, Water Tight	1.650-1.670"
20001846	1.50" Push-Lock HDPE Push On, Air Tight, Water Tight	1.890-1.910"
20001847	2" Push-Lock HDPE Push On, Air Tight, Water Tight	2.365-2.385"



## Shur-Lock Coupler

- One person installation
- Re-enterable, no special tools required
- Air and water tight
- Excellent pull out strength on HDPE, PVC, FRP and steel
- No I.D. reduction
- ETL Listed
- Listed to CSA STD C22.2 18.3-04
- Listed to UL STD 514B

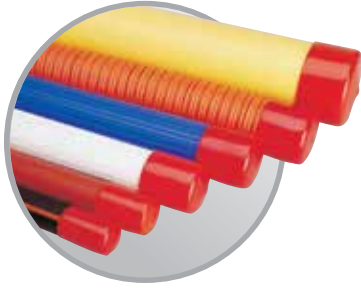
Dura-Line #	Product Description	Duct OD Working Range	Nominal Pull-Out Strength
20000118	1.0" Shur-Lock Coupler	SDR 1.315" ± 0.020"	600 lbs
20000120	1.25" Shur-Lock Coupler	SDR 1.660" ± 0.020"	700 lbs
20000122	1.5" Shur-Lock Coupler	SDR 1.900" ± 0.020"	800 lbs
20000123	2.0" Shur-Lock Coupler	SDR 2.375" ± 0.020"	800 lbs
20000173	3.0" Shur-Lock Coupler	SDR 3.500" ± 0.020"	1,000 lbs
20000245	4.0" Shur-Lock Coupler	SDR 4.500" ± 0.020"	1,000 lbs



## Reverse Threaded Aluminum Coupler

- Wide tolerance to fit most conduits
- Easy to install
- Not air or water tight
- Threads may reduce conduit I.D.
- Self-threading, which draws each end of the conduit into the center of the coupler.

Dura-Line #	Product Description	Fits Conduit OD Range
20001955	1.0" Reverse Threaded Aluminum Coupler	1.230" to 1.400"
20002865	2.0" Reverse Threaded Aluminum Coupler	2.310" to 2.450"



## Vinyl End Caps

- Dust/dirt cover
- Protects inner contents from disturbance
- Flexible nature allows for easy installation
- Excellent stay ability
- Soft material cushions cable ends
- Stocked in 1½" lengths
- -20°F to 300°F

Dura-Line #	Product Description	Duct OD
20001808	1.0" Red Vinyl End Cap	1.315 x 1.5"
20001815	2.0" Red Vinyl End Cap	2.375 x 1.5"



## Pull Tape

- Stiff-Tape™ Lubricated Coating  
-Resulting in High Performance Pull Tape
- Good blowability into conduit
- Lowest burn-through resistance
- Accurate sequential foot or meter markings
- Can be pre-installed into conduit
- Exceeds requirements of Bellcore GR-356-CORE

Dura-Line #	Product Description	Length
20000052	1,250# Pull Tape	3,000'

## Detectable Pull Tape

- Incorporates a tracer wire for signal locating
- Corrosion resistant fibers and conductor
- Accurate sequential foot or meter markings
- Wire conductors can be easily spliced in the field
- Can be factory pre-installed into conduit
- 22AWG (Solid) BC Semi-Rigid PVC Insulated 300V
- Conductor Diameter .025 inches
- NOM OD .045
- Approx. FIN WT 2.70 (lbs./M2)

Dura-Line #	Product Description	Length
20000059	1,250# Detectable Pull Tape	3,000'